

**Essential
Question:**

**What events led to
the end of the war?**



What were the effects of the dropping of the bombs?

- ◆ Japans leaders refused to give up
- ◆ United States knew that INVADING Japan would lead to many deaths on both sides
- ◆ They decided to use a newly developed deadly weapon, the ATOMIC BOMB on Japanese cities



The deadliest Weapon

- ◆ This type of bomb could be created using Uranium.
- ◆ Hitler was occupying the countries with the largest Uranium supplies
- ◆ Einstein wrote a letter to the President of the United States, warning that the NAZIS could be in development of a Nuclear Weapon
- ◆ Fear of the Nazis developing this terrible weapon first led the United States to launch the Manhattan Project, a top-secret plan to create the weapon first





The plane that dropped the bomb was called the Enola Gay, named after the pilot's mother.



[Hiroshima: Dropping the Bomb 4 min](#)

◆ On August 6th, 1945, the first atomic bomb was dropped on the city of HIROSHIMA

◆ The entire city was destroyed in SECONDS





**The mushroom cloud rose
over 45,000 feet into the air.**

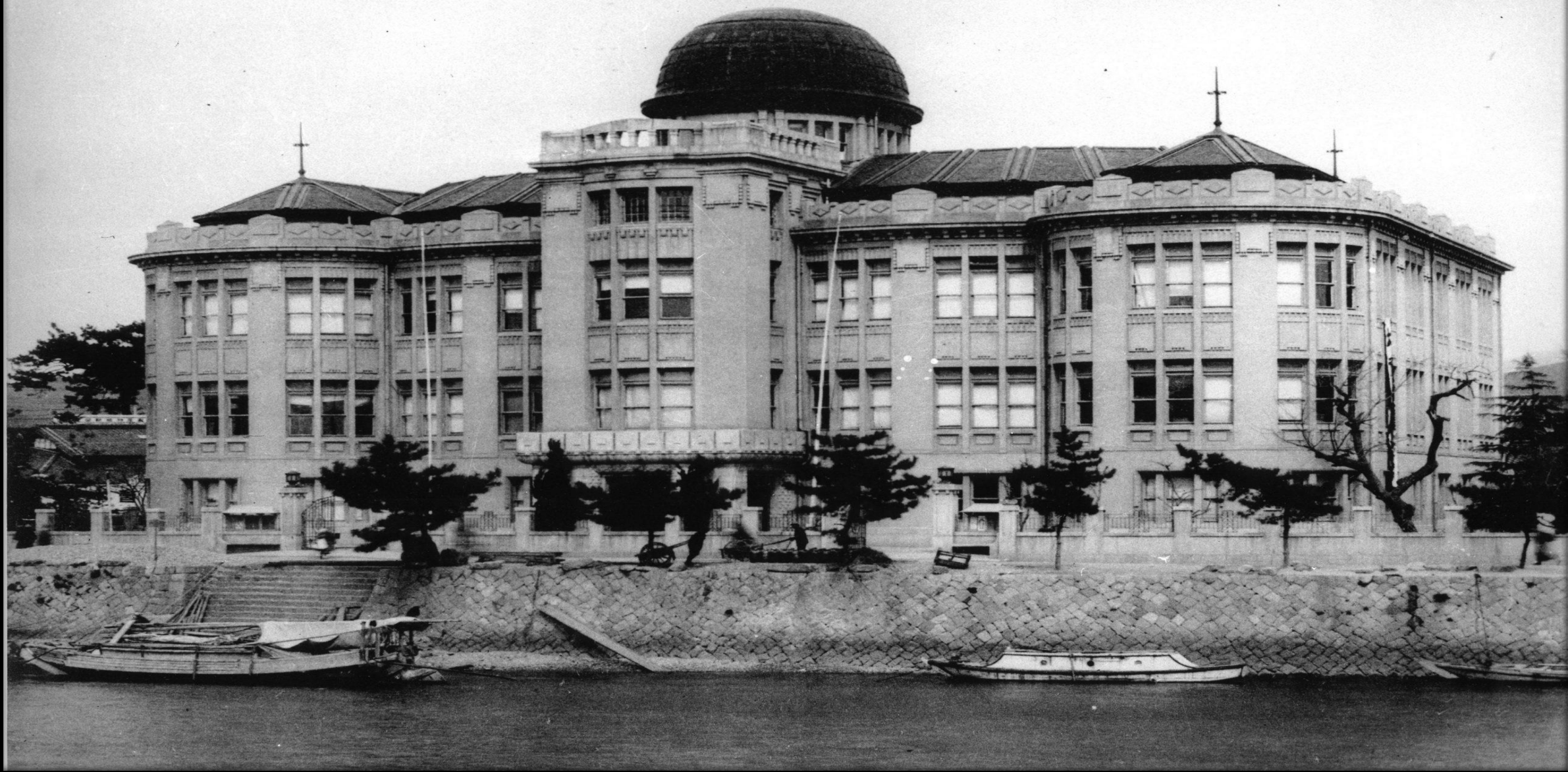
The Fireball

がごく短時間、広島
に約5万人前後の人々が
と見られています。原爆
による死者数については、
昭和20年12月まで
約14万人(誤差±1万人)
が推定されたと推定されてい
ます。

It is thought that approximately 50,000
people were in Hiroshima when the
atomic bomb exploded. It is estimated
that approximately 140,000 people died
by the end of December 1945.



The A-Dome





Before:






After:

◆ Nearly 80,000 people died instantly. Over 200,000 people would ultimately die from the bombing



原爆ドームの説明板が、右側の場所にありますので、ご覧ください。

Please refer to the Atomic Bomb information signboard indicated on map to the right.

 世界遺産原爆ドーム

人類史上最初の原子爆弾による被害の惨状を伝える歴史の証人として、核兵器廃絶と平和を求むる人々の心象として、世界の文化遺産及び自然遺産の登録を受けている。

原爆ドーム

1945年8月9日、広島市に落下した原子爆弾の被害を伝える歴史の証人として、核兵器廃絶と平和を求むる人々の心象として、世界の文化遺産及び自然遺産の登録を受けている。





[Video of paper cranes](#) 5 min



Japan did not surrender

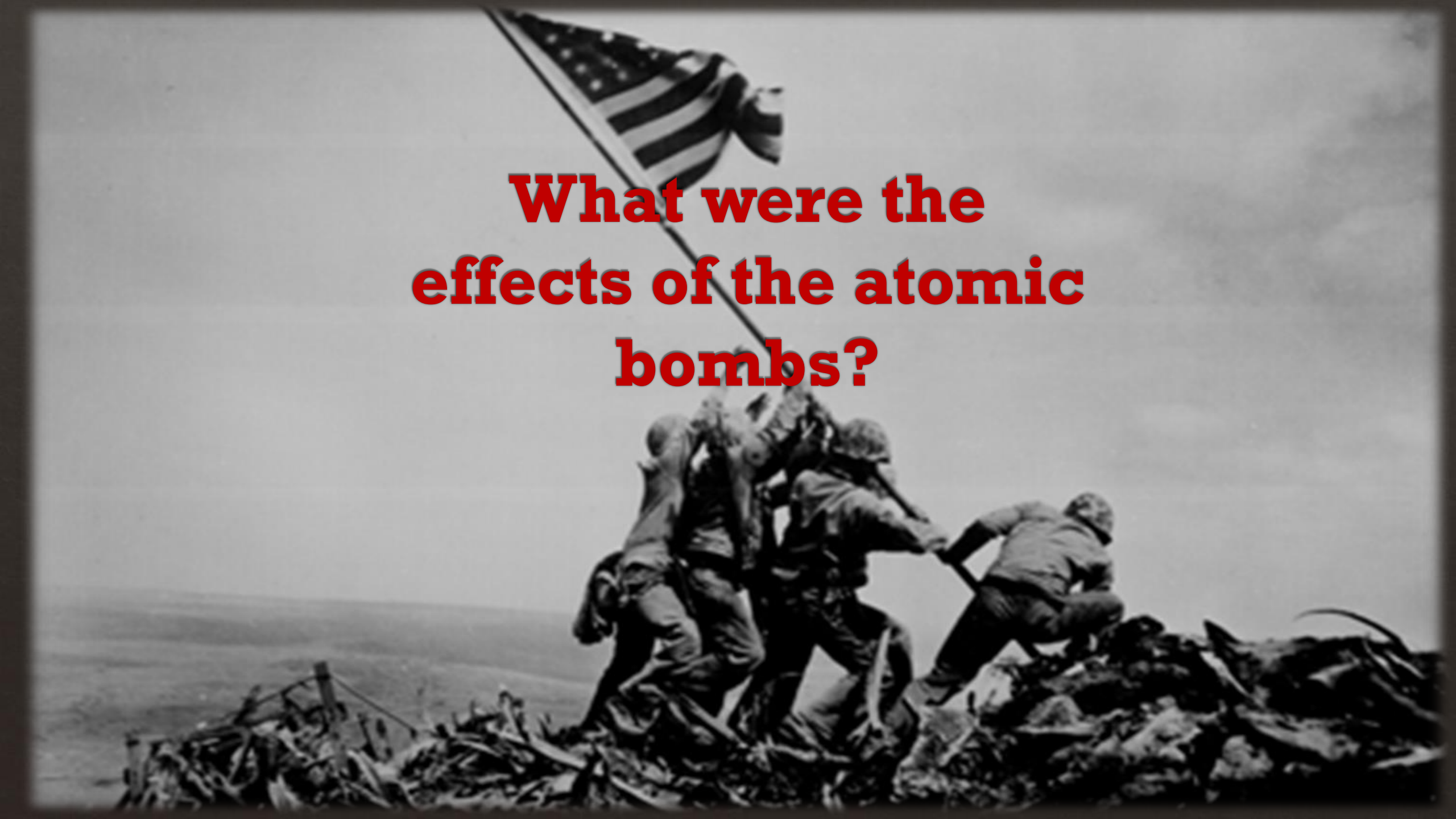
Three days later the United States dropped another bomb on the city of NAGASAKI, where an additional 74,000 people would die

Japan surrendered on August 14th, 1945

The second world war had come to an end



**What were the
effects of the atomic
bombs?**



What were some effects of the war?

- ◆ The war was fought across the entire world, nearly every continent was involved
- ◆ Over EIGHTY MILLION people died during the war
- ◆ Cities were destroyed
- ◆ Governments had collapsed
- ◆ Nations had to be REBUILT



Germany was divided up and occupied by the Allied Powers after the war.



◆ Soon the United States began to fear the Soviet Union and their COMMUNIST government

◆ The United States and the Soviet Union, who had once been allies, would soon become bitter ENEMIES

◆ Another, much *more* dangerous war was looming ahead...

AFTERMATH OF WORLD WAR II:

half of Europe under communist dictatorship (1955)

- ★ Warsaw Treaty Organisation, pushed by the Soviet Union
- ★ States and lands reoccupied by the Soviet Union
- ★ Soviet Union's core territories (Russia)



What were some effects of the war?



**Essential
Question:**

**What events led to
the end of the war?**



Number of Deaths by Country During World War II



Number of deaths during WWII 3 min

The End...?



◆ Power Point created by James Reese, 2014
◆ Primary source Harcourt Social Studies Ancient Civilizations, Volume Two
◆ Copyright by Houghton Mifflin Harcourt Publishing Company 2010 Edition