

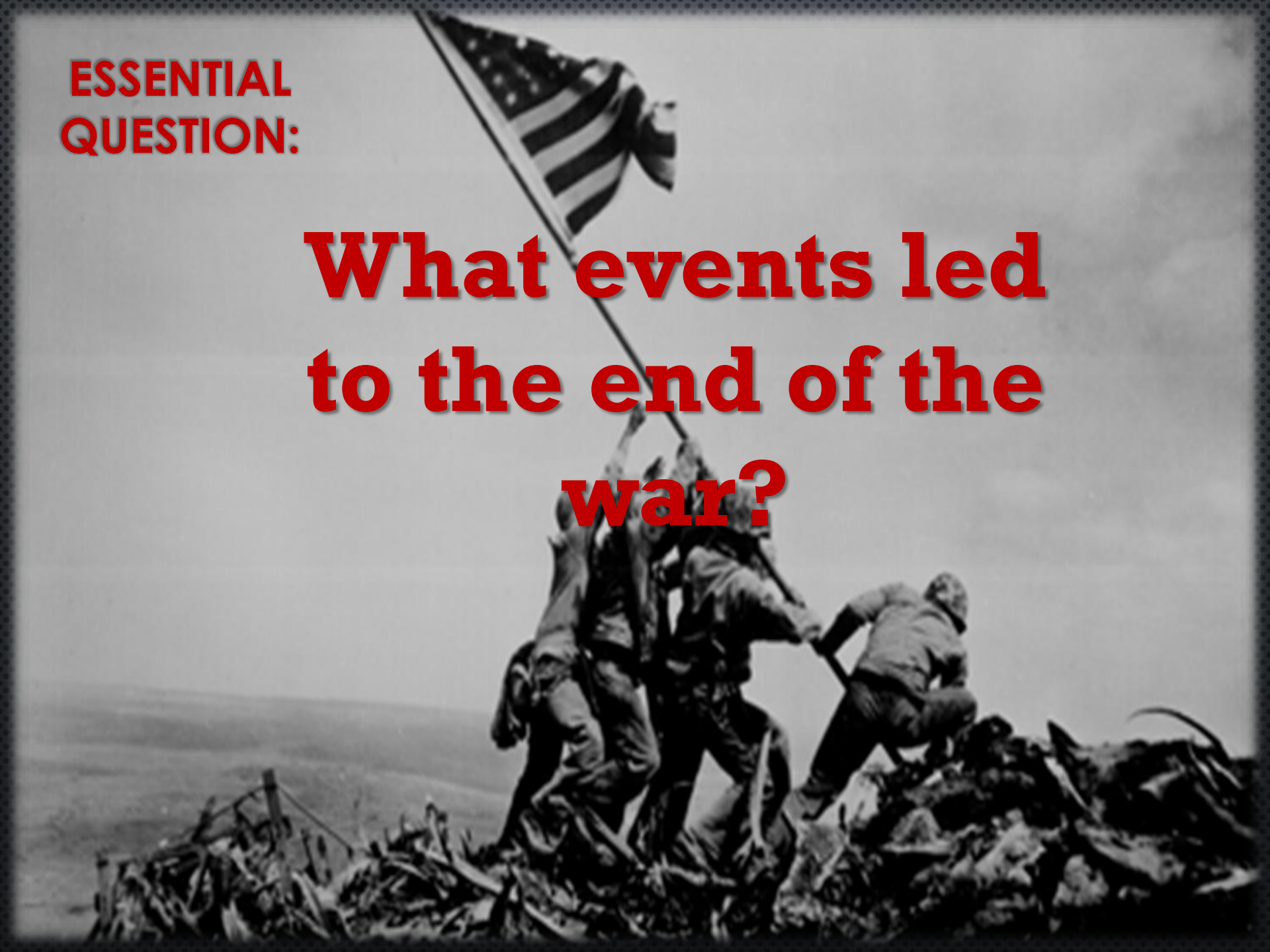
World War II

**D-DAY AND THE
ATOMIC BOMBS. THE
END OF THE WAR**



**ESSENTIAL
QUESTION:**

**What events led
to the end of the
war?**

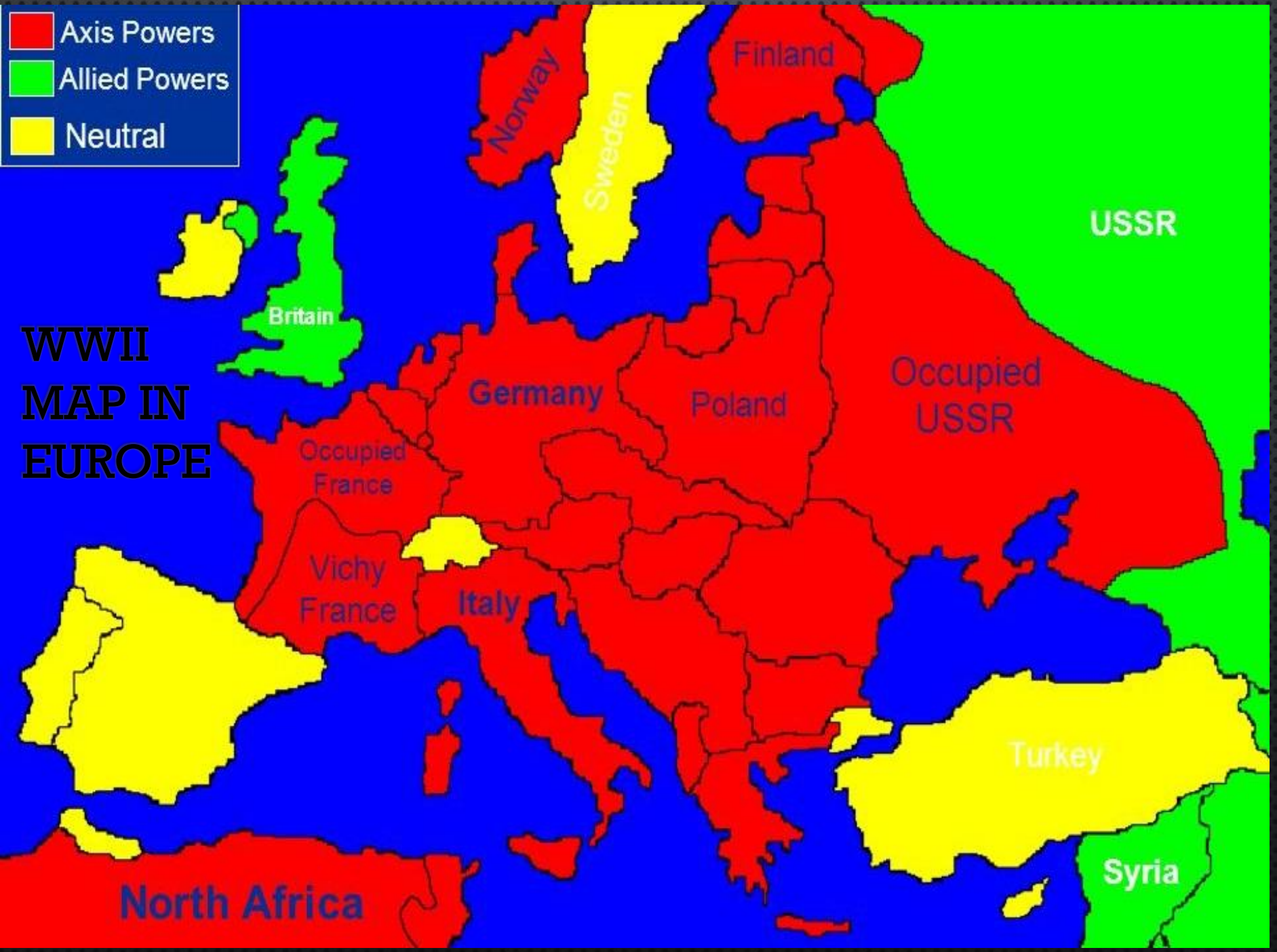


Which countries were fighting in the war?

- THE AXIS POWERS WERE JAPAN, GERMANY, ITALY AND OTHERS.
- THE ALLIES FIGHTING AGAINST THEM WERE BRITAIN, THE UNITED STATES, FRANCE, THE SOVIET UNION, AND CHINA
- THE FIGHTING WAS TAKING PLACE ALL OVER THE WORLD

- Axis Powers
- Allied Powers
- Neutral

WWII MAP IN EUROPE





**WWII MAP
IN THE
PACIFIC**

World War II Allied/Axis

Individual countries



Click on America,
Great Britain,
Russia, Germany,
Japan, or Italy to
get started

- Green**- Allies before the attack on Pearl Harbor
- Blue**- Allies after the attack on Pearl Harbor
- Black**- Axis Powers
- Red**- Russia started Axis and switched to Allied
- Gray**- Neutral or not involved countries



**WHO WERE THE
ALLIES?**

**WHO WERE THE
AXIS POWERS?**

WHAT WAS D-DAY?

- THE UNITED STATES AND ITS ALLIES FOUGHT THE NAZIS FOR THREE YEARS
- SOVIET UNION FORCES CONTINUED TO PUSH THE GERMANS OUT OF THEIR NATION
- ALLIED LEADERS DEvised AN ATTACK THAT WOULD SURROUND THE AXIS POWERS
- ON JUNE 6TH, 1944, THE ALLIES CARRIED OUT A SURPRISE ATTACK ON THE BEACHES OF NORMANDY, FRANCE, WHICH WAS THEN OCCUPIED BY THE GERMANS

- IF THE PLAN WORKED, THE AXIS POWERS WOULD BE **SURROUNDED** ON THREE SIDES, THE EAST, WEST, AND SOUTH
- OVER 11,000 PLANES, 2,700 SHIPS, AND **200,000** MEN STORMED THE BEACHES OF NORMANDY AT 6:00 IN THE MORNING.





- ALTHOUGH THE ALLIES HAD BEEN PLANNING AND PREPARING FOR D-DAY FOR OVER 2 MONTHS, MANY THINGS STILL DID NOT GO AS PLANNED
- OVER 13,000 BOMBS WERE DROPPED TOO SOON AND MISSED THEIR TARGETS.
- THE GERMANS HAD MINES ON THE BEACHES AND SNIPERS IN THE HILLS
- THE WEATHER TURNED BAD, AND THE TIDES WERE TERRIBLE
- MANY OF THE TANKS BEGAN TO SINK IN THE SAND
- DUE TO POOR VISIBILITY, MANY PARATROOPERS WERE SHOT DOWN OR LANDED BEFORE THEIR CHUTES OPENED.




- AT THE END OF THE DAY, THE ALLIED FORCES HELD THE BEACHES, THEY MOVED ON TO FREE PARIS.
- THE ENEMY WAS NOW SURROUNDED



GENERAL DWIGHT D. EISENHOWER'S D-DAY MESSAGE 1 MIN



D-Day overview, D-day broadcast 10 min

A photograph of President Ronald Reagan standing at a podium, speaking. He is wearing a dark suit and a tie. The background is a large, light-colored wall with a large window. The text "40TH ANNIV. OF D-DAY" is overlaid on the right side of the image. Below the text, there is a horizontal line and the date "JUNE 6, 1984".

40TH ANNIV. OF D-DAY

JUNE 6, 1984

[Speech by President Ronald Reagan on 40th anniversary of D-Day 13 min](#)

THE END OF THE WAR

- NEARLY A YEAR AFTER D-DAY, ALLIED FORCES HAD PUSHED THE NAZI TROOPS BACK INTO GERMANY.
- THE SOVIET UNION HAD MOVED THEIR TROOPS ALL THE WAY INTO GERMANY'S CAPITAL OF **BERLIN**
- ON MAY 7TH, 1945, ADOLF HITLER KILLED HIMSELF TO AVOID BEING CAPTURED
- GERMANY **SURRENDERED**, THE WAR IN EUROPE HAD ENDED.
- JAPAN REFUSED TO STOP **FIGHTING**

WHAT WAS D- DAY?



WHAT WERE THE EFFECTS OF THE DROPPING OF THE BOMBS?

- JAPAN'S LEADERS REFUSED TO GIVE UP
- UNITED STATES KNEW THAT INVADING JAPAN WOULD LEAD TO MANY DEATHS ON BOTH SIDES
- THEY DECIDED TO USE A NEWLY DEVELOPED DEADLY WEAPON, THE ATOMIC BOMB ON JAPANESE CITIES



THE PLANE THAT DROPPED THE BOMB WAS
CALLED THE ENOLA GAY



- ON AUGUST 6TH, 1945, THE FIRST ATOMIC BOMB WAS DROPPED ON THE CITY OF **HIROSHIMA**
- THE ENTIRE CITY WAS DESTROYED IN **SECONDS**



12/07/45



HIROSHIMA: DROPPING THE BOMB 4 MIN

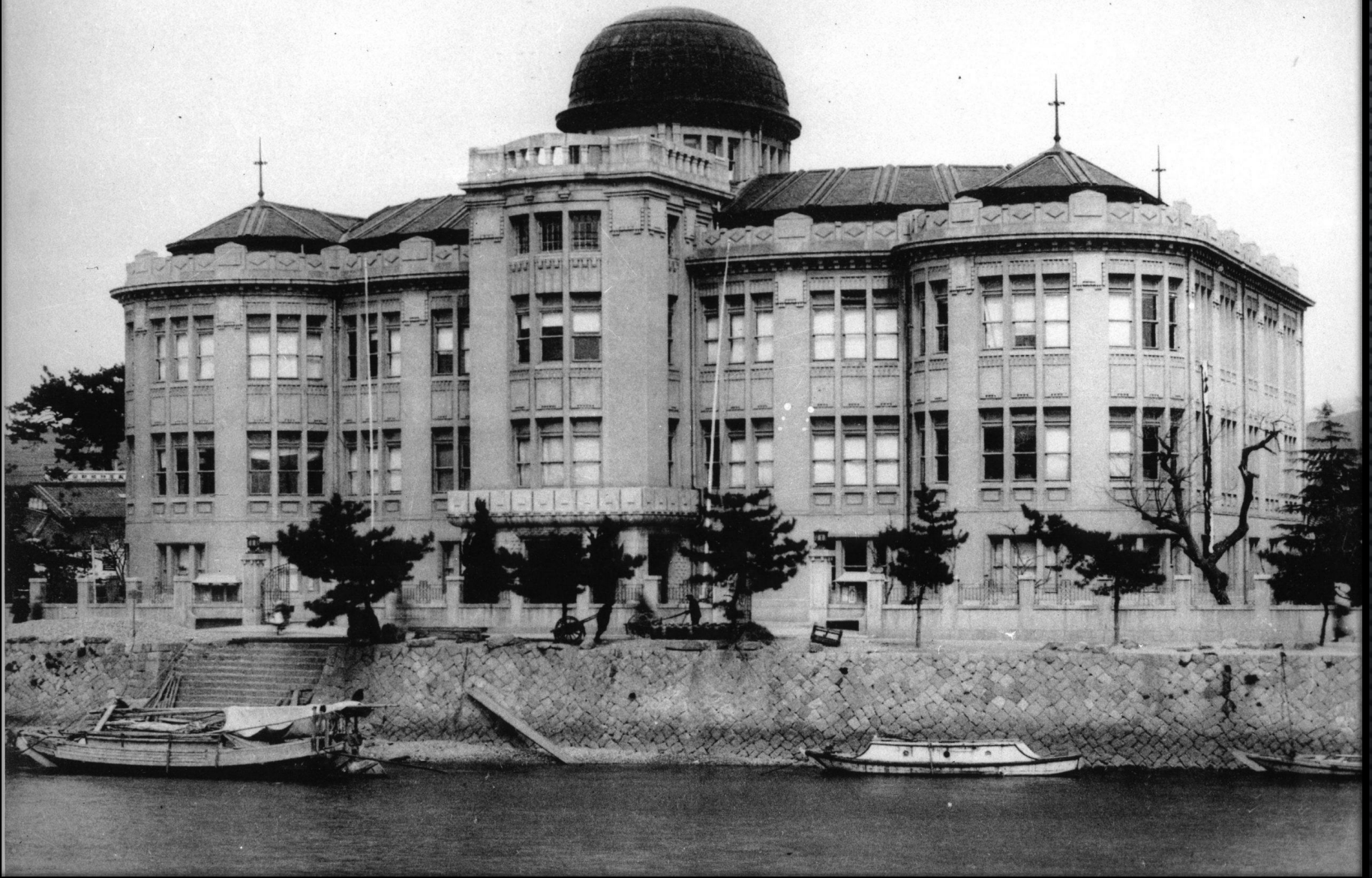


**THE MUSHROOM CLOUD ROSE OVER
45,000 FEET INTO THE AIR.**

BEFORE:



THE A-DOME



THE FIREBALL

がごとく裂いたとき、広島
に5万人前後の人々がいた
と考えられています。原爆
による死亡者数については、
1946年(昭和21年)12月末まで
に約14万人(原爆士1万人)
が死したと推定されてい
ます

It is thought that approximately 50,000
people were in Hiroshima when the
atomic bomb exploded. It is estimated
that approximately 140,000 people had
died by the end of December 1945.



AFTER:

- 50,000 PEOPLE DIED INSTANTLY. OVER 140,000 PEOPLE WOULD ULTIMATELY DIE FROM THE BOMBING





原爆ドームの説明板が
右側の欄にあります
ので、ご覧ください。

Please refer to the A-bomb
Dome information signboard
indicated on map to the right.

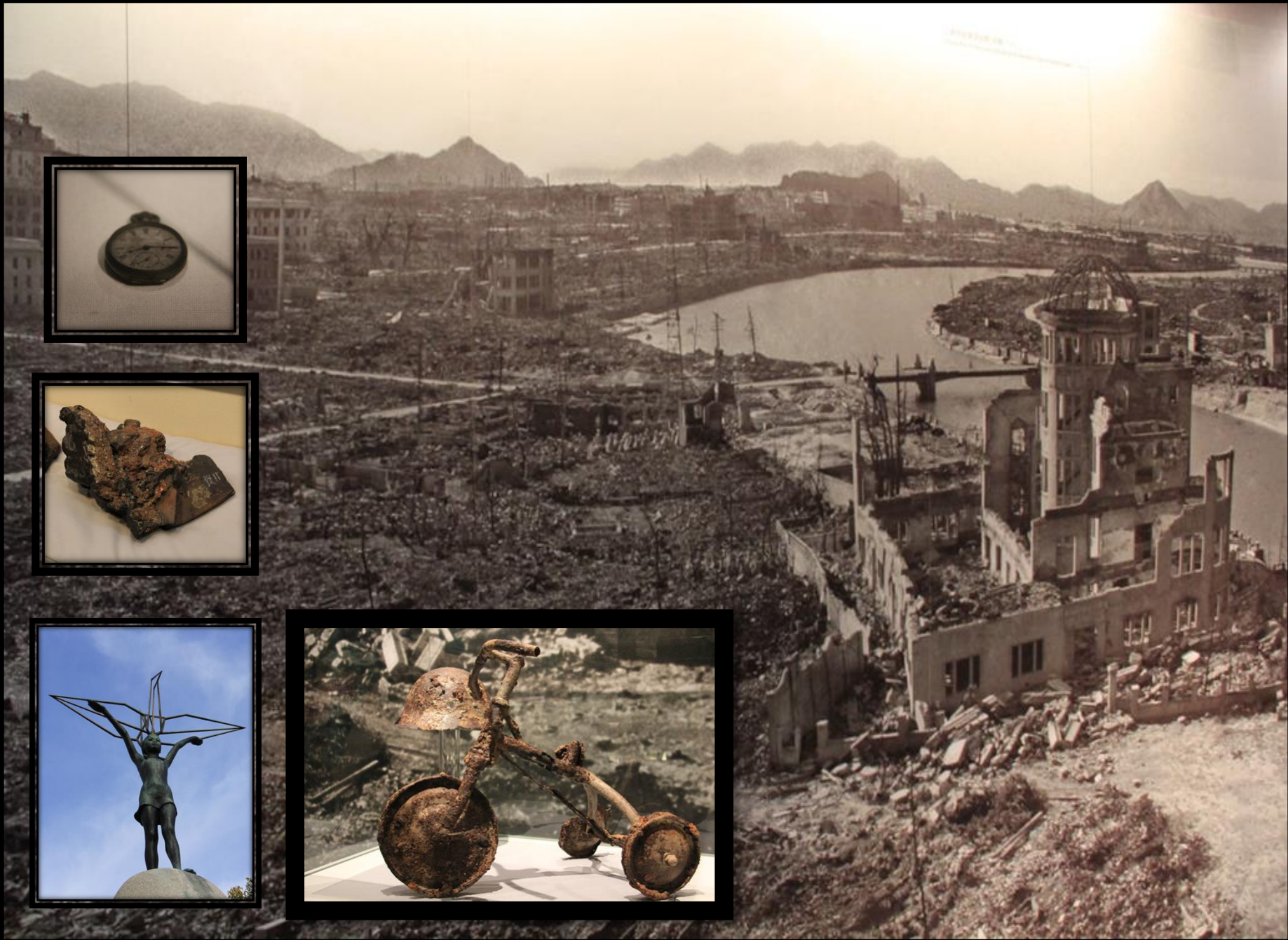


世界遺産 原爆ドーム

人類史上最初の原子爆弾による破壊の惨禍に
歴史の証人として、戦後復興の象徴として、
平和の祈りとして、世界遺産として、

原爆ドーム

原爆ドームは、1945年8月9日、広島市に投下された原子爆弾による被害の象徴として、戦後復興の象徴として、平和の祈りとして、世界遺産として、



Japan did not surrender

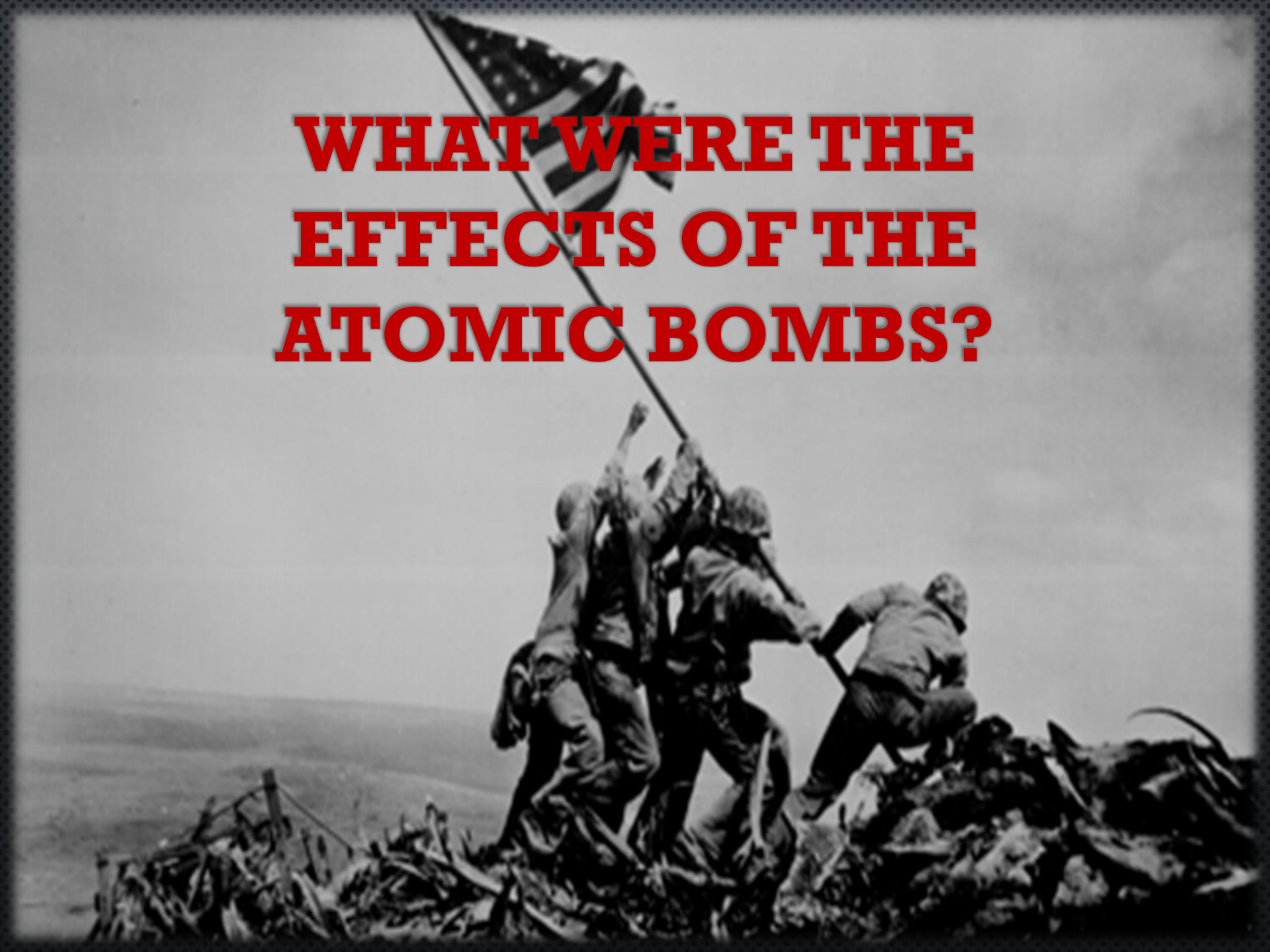
Three days later the United States dropped another bomb on the city of **NAGASAKI**, where an additional 74,000 people would die

Japan surrendered on August 14th, 1945

The second world war had come to an end



**WHAT WERE THE
EFFECTS OF THE
ATOMIC BOMBS?**



WHAT WERE SOME EFFECTS OF THE WAR?

- THE WAR WAS FOUGHT ACROSS THE ENTIRE WORLD, NEARLY EVERY CONTINENT WAS INVOLVED
- OVER FIFTY MILLION PEOPLE DIED DURING THE WAR
- CITIES WERE DESTROYED
- GOVERNMENTS HAD COLLAPSED
- NATIONS HAD TO BE REBUILT



GERMANY
WAS
DIVIDED UP
AND
OCCUPIED
BY THE
ALLIED
POWERS
AFTER THE
WAR.



- SOON THE UNITED STATES BEGAN TO FEAR THE SOVIET UNION AND THEIR **COMMUNIST** GOVERNMENT
- THE UNITED STATES AND THE SOVIET UNION, WHO HAD ONCE BEEN ALLIES, WOULD SOON BECOME BITTER **ENEMIES**
- ANOTHER, MUCH MORE DANGEROUS WAR WAS LOOMING AHEAD...

AFTERMATH OF WORLD WAR II:

half of Europe under communist dictatorship (1955)

- ★ Warsaw Treaty Organisation, pushed by the Soviet Union
- ★ States and lands reoccupied by the Soviet Union
- ★ Soviet Union's core territories (Russia)

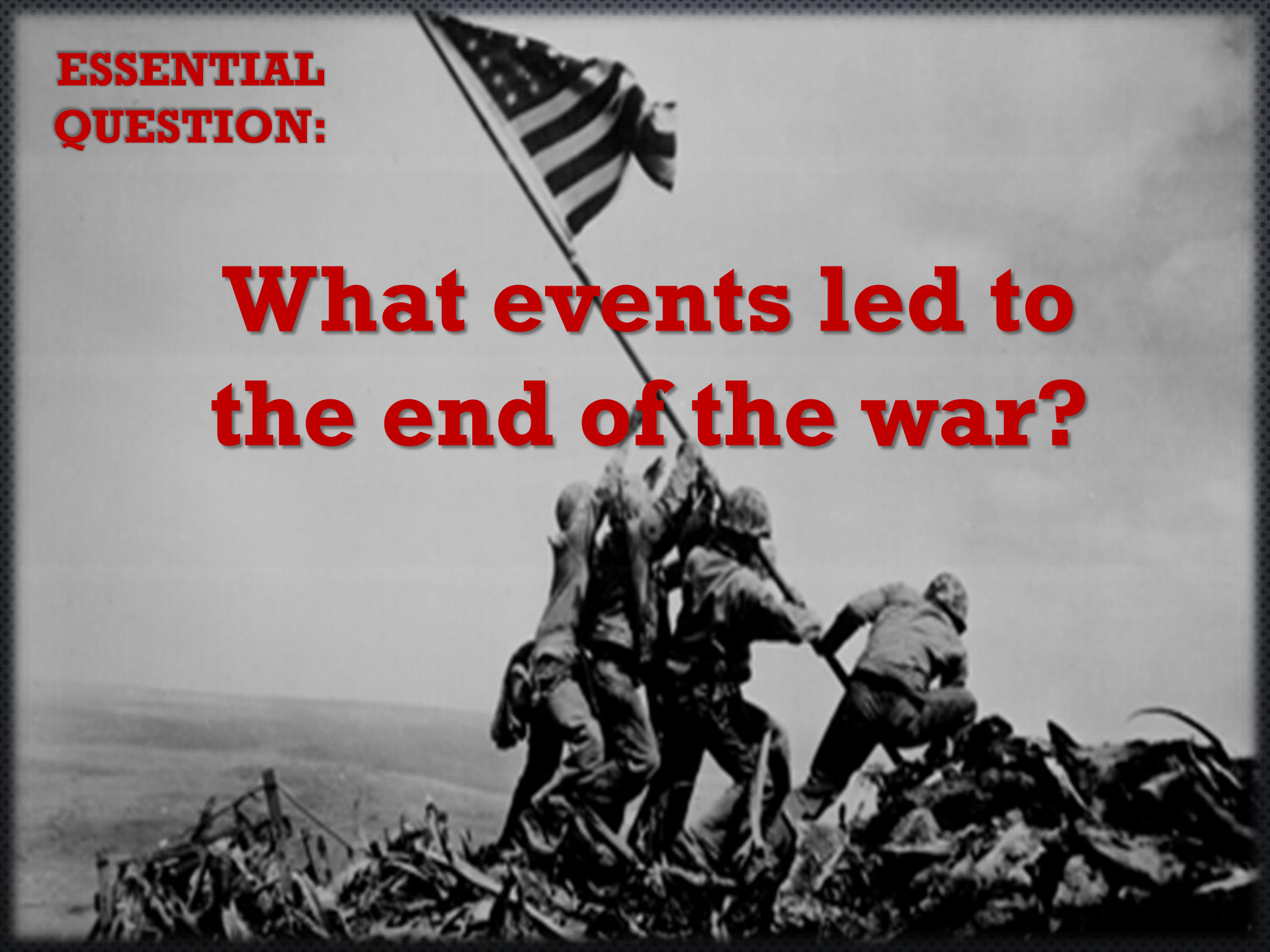


**WHAT WERE SOME
EFFECTS OF THE
WAR?**



**ESSENTIAL
QUESTION:**

**What events led to
the end of the war?**



Number of Deaths by Country During World War II



Total Deaths: 55,000,000



THE END...?

• POWER POINT CREATED BY JAMES REESE, 2014

• PRIMARY SOURCE HARCOURT SOCIAL STUDIES ANCIENT CIVILIZATIONS, VOLUME TWO

• COPYRIGHT BY HOUGHTON MIFFLIN HARCOURT PUBLISHING COMPANY 2010 EDITION