

THE

BLACK
DEATH

**WHAT WAS THE BLACK DEATH AND HOW DID IT
IMPACT EUROPE?**

THE
BLACK
DEATH

Essential Question

WHERE DID THE PLAGUE ORIGINATE?

- THE PLAGUE ARRIVED IN EUROPE IN OCTOBER OF 1347
- TWELVE SHIPS FROM THE BLACK SEA DOCKED AT A SICILIAN PORT OF MESSINA OFF THE COAST OF ITALY
- THE PASSENGERS ON THE SHIPS WERE DEAD OR DYING, COVERED IN BLACK BOILS THAT OOZED PUS AND BLOOD
- THE TWELVE “DEATH SHIPS” WERE IMMEDIATELY SENT AWAY TO GET RID OF THE DYING CREW
- BUT IT WAS TOO LATE, THE PLAGUE HAD ARRIVED IN EUROPE, AND THINGS WOULD NEVER BE THE SAME.....



- **THE PLAGUE ORIGINATED IN CHINA IN 1334 CE**
- **IT SPREAD ALONG TRADE ROUTES MOVING WESTWARD**



WHERE DID THE PLAGUE ORIGINATE?

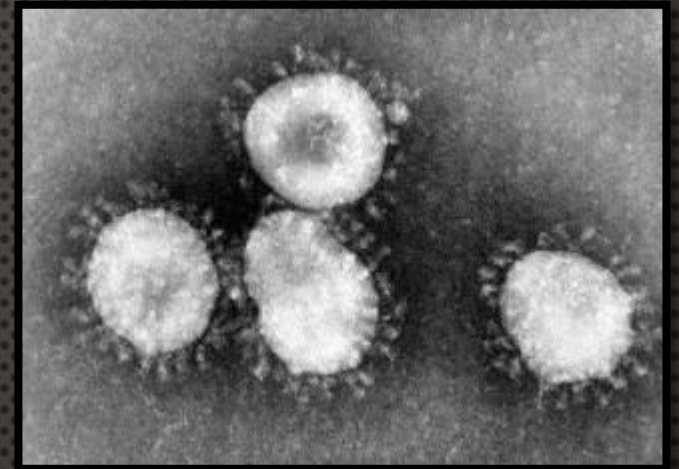
THE
B L A C K
D E A T H

WHAT WAS THE BLACK DEATH?

- THE BLACK DEATH, GREAT PESTILENCE, OR BUBONIC PLAGUE, WAS THE DEADLIEST PANDEMIC THE WORLD HAS EVER SEEN.
- ONCE THE VICTIM CONTRACTED THE ILLNESS, THEY WOULD USUALLY BE DEAD WITHIN ABOUT 8 DAYS
- THE PLAGUE LASTED FROM 1347 TO 1353 CE
- AN ESTIMATED 50 MILLION PEOPLE WERE KILLED
- 60 PERCENT OF EUROPE'S POPULATION WAS KILLED



- THE PLAGUE IS CAUSED BY A BACTERIUM CALLED YERSINIA PESTIS
- DISCOVERED IN 1894 BY ALEXANDRE YERSIN
- THE BACTERIUM DISABLES THE IMMUNE SYSTEM OF THE HOST.
- THERE WERE THREE TYPES OF THE PLAGUE
- THE DISEASE WAS NICKNAMED THE BLACK DEATH, BECAUSE SKIN SORES AFTER AN INFECTION TURNED BLACK.
- THE REAL NAME IS THE BUBONIC PLAGUE, NAMED BECAUSE OF THE BUBOES (INFLAMMATORY SWELLING OF LYMPHOID GLANDS)





- [BLACK DEATH 5 MIN](#)

Three Types

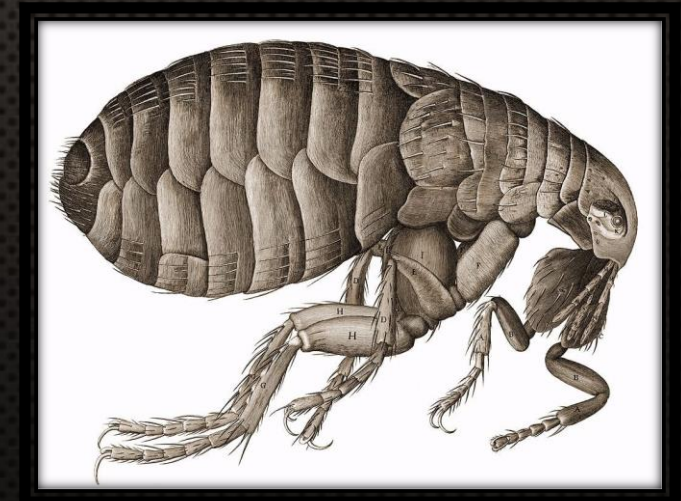
- **Pneumonic** *Plague* attacked the lungs.
- Destroyed the breathing system
- Could be caught if someone breathed on you.
- Had less than 3 days
- **Bubonic** *Plague* attacked lymph nodes and caused large swellings
- To catch you had to be bitten by a flea that had already bitten a black rat.
- Had less than 5 days.
- **Septicemic** *Plague* attacked the bloodstream
- To catch you had to be bitten by a flea that had already bitten a black rat.
- Kills faster than bubonic plague

WHAT WAS THE BLACK DEATH?

THE
BLACK
DEATH

HOW DID IT SPREAD?

- THREE THINGS CAUSED THE BLACK DEATH TO SPREAD SO QUICKLY
 - INCREASED INTERNATIONAL TRADE ALONG THE SILK ROAD
 - RISING URBAN POPULATION
 - LACK OF MEDICAL KNOWLEDGE
- SMALL RODENTS, SUCH AS RATS, WERE HOSTS TO FLEAS ON WHICH THE DISEASE WAS CARRIED
- WHEN THE RODENTS DIED FROM THE PLAGUE, THE FLEAS WOULD JUMP TO A NEW HOST, HUMANS



- ONCE A PERSON HAD CONTRACTED THE DISEASE, IT COULD ALSO BE SPREAD PERSON TO PERSON
- IF THE DISEASE PROGRESSED TO THE LUNGS, IT COULD BE CONTRACTED THROUGH BREATHING AIRBORNE PARTICLES FROM THE INFECTED PERSON'S LUNGS.

[BLACK DEATH 10 MIN](#)



BLACK DEATH



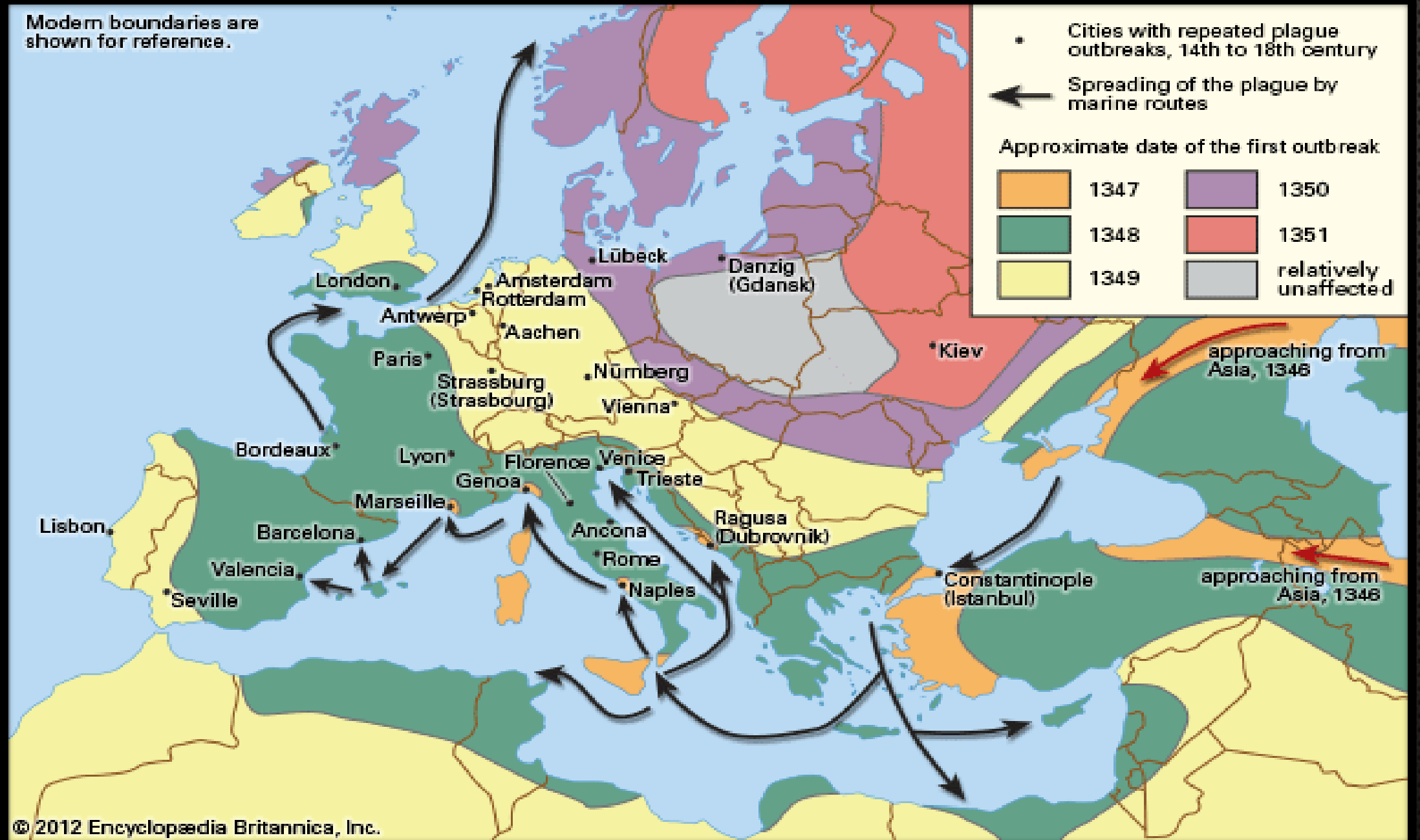
[BLACK DEATH 10 MIN](#)

Modern boundaries are shown for reference.

- Cities with repeated plague outbreaks, 14th to 18th century
- ← Spreading of the plague by marine routes

Approximate date of the first outbreak

1347	1350
1348	1351
1349	relatively unaffected



HOW DID IT SPREAD?

THE
BLACK
DEATH

WHAT WERE THE SYMPTOMS?



- THE MOST COMMON FORM OF THE PLAGUE WAS THE BUBONIC PLAGUE
- SYMPTOMS DID NOT USUALLY SHOW UP FOR 1 TO 6 DAYS
- SYMPTOMS INCLUDED PAINFUL AND ENLARGED OR SWOLLEN LYMPH NODES (CALLED BUBOES), CHILLS, FATIGUE, HEADACHE, FEVER, AND WEAKNESS.
- THE BUBOES WERE IN THE NECK ARMPIT, AND GROIN AREAS, THEY WOULD GROW THE SIZE OF A CHICKEN EGG
- IF LEFT UNTREATED, THE VICTIM WOULD BE DEAD WITHIN A FEW DAYS.

What were the symptoms of the plague?



Day 1 Painful swellings called buboes appeared in the victim's armpits and groin. These were usually about the size of an egg, but could sometimes be as big as an apple.



Day 4 The disease attacked the nervous system. This caused the victim to suffer spasms. The victim was in terrible pain.



Day 2 The victim vomited and developed a fever.



Day 5 Sometimes the buboes burst and a foul-smelling black liquid oozed from the open boils. When this happened the victim usually lived. However, in most cases the victim suffered a painful death.



Day 3 Bleeding under the skin caused dark blotches all over the body.

WHAT WERE THE SYMPTOMS?

THE
B L A C K
D E A T H

HOW DID PEOPLE RESPOND TO THE PLAGUE?

- PEOPLE DID NOT KNOW WHAT HAD CAUSED THE BLACK DEATH, SOME BELIEVED IT HAD BEEN SENT BY GOD AS A PUNISHMENT
- OTHERS THOUGHT IT WAS AN EVIL MIST THAT HAD SPREAD THE DISEASE



- PEOPLE WERE NOT SURE HOW TO STOP THE PLAGUE, THEY TRIED ALL SORTS OF METHODS
 - SOME WOULD TRY TO BLOOD LET, OR DRAIN THE BLOOD OUT OF PLAGUE VICTIMS
 - OTHERS ATTACHED LIVE CHICKENS OR TOADS TO THE BUBOES
 - SOME PEOPLE EVEN WENT FROM TOWN TO TOWN WHIPPING THEMSELVES, TRYING TO BEAT THE PLAGUE OUT OF THEMSELVES AND OTHERS. THEY CALLED THEMSELVES THE BROTHERHOOD OF FLAGELLANTS
 - OTHERS BLAMED THE JEWS FOR THE DISEASE AND MASSACRED MANY INNOCENT JEWISH PEOPLE
 - EATING CRUSHED EMERALDS



HOW DID PEOPLE
RESPOND TO THE
PLAGUE?

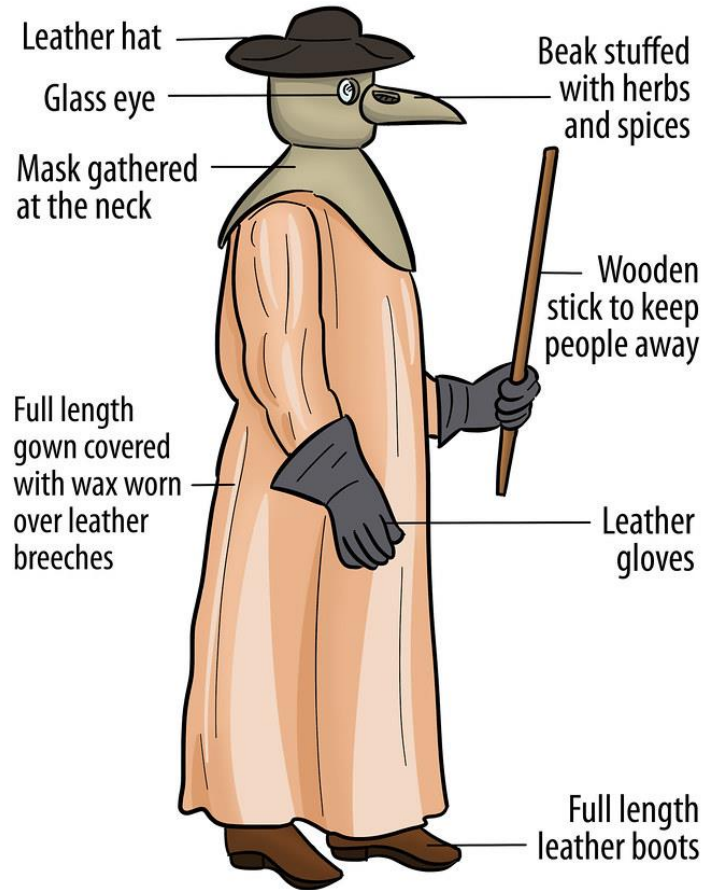
THE
BLACK
DEATH

WHAT WERE THE PLAGUE DOCTORS?

- PLAGUE DOCTORS BECAME COMMON
- PEOPLE FEARED THE DISEASE COULD BE SPREAD THROUGH TOUCH, SMELL, OR EVEN LOOKING AT SOMEONE WHO HAD THE PLAGUE.
- DOCTORS WORE CLOTHES TO PROTECT THEM FROM SEEING, TOUCHING, OR EVEN SMELLING THE VICTIMS.
- THEY WORE LONG BEAKS STUFFED WITH FLOWERS TO BLOCK THE SMELL, ROSE TINTED STONES OVER THEIR EYES, A WIDE BRIMMED HAT AND LONG CLOAKS
- THEY USED STICKS TO KEEP PEOPLE AT A DISTANCE



The Plague Doctor





The English plague nursery rhyme

*Ring around the rosy
A pocketful of posies
“Ashes, Ashes”
We all fall down.*

Meaning:

*Red rash around the mouth
Flowers to mask plague odors
Violent sneezing associated with plague
Death of all the infected*

WHAT WERE THE PLAGUE
DOCTORS?

THE
BLACK
DEATH

WHAT AFFECT DID THE PLAGUE HAVE ON EUROPE?

- AN ESTIMATED ONE THIRD OF EUROPE'S POPULATION DIED DUE TO THE PLAGUE
- IT TOOK BETWEEN 80 TO 150 YEARS FOR POPULATIONS TO RECOVER IN SOME TOWNS AND CITIES
- SOME TOWNS WERE COMPLETELY ABANDONED
- THE FEUDAL SYSTEM BROKE DOWN EVEN MORE
- FEWER PEOPLE MEANT MORE LAND, WORK, AND HIGHER WAGES FOR THE PEASANTS
- THE PLAGUE ATTACKED AND KILLED OLD AND YOUNG, RICH AND POOR, IT DID NOT DISCRIMINATE
- MANY CHRISTIANS BELIEVED THE PLAGUE HAD BEEN SENT BY GOD, SO WHEN PRIESTS AND CHURCH LEADERS DIED ALONGSIDE PEOPLE CONSIDERED TO BE SINNERS, THIS CAUSED THE CHRISTIANS TO BEGIN TO QUESTION THEIR FAITH

WHAT AFFECT DID THE PLAGUE HAVE ON EUROPE?

THE
B L A C K
D E A T H

WHAT HAS MODERN SCIENCE TAUGHT US ABOUT THE PLAGUE?

- THE BUBONIC PLAGUE STILL EXISTS TODAY
- IT IS EASILY TREATED WITH ANTIBIOTICS, AND PEOPLE RECOVER WITHIN A WEEK OR TWO
- VERY FEW CASES ARE REPORTED EACH YEAR
- THE DISEASE CAN EASILY BE AVOIDED SIMPLY BY WASHING HANDS AND PRACTICING GOOD HYGIENE
- [PLAGUE TODAY 1 MIN](#)



WHAT WAS THE BLACK DEATH AND HOW DID IT IMPACT EUROPE?

THE BLACK DEATH